



T-200EM

TABLETOP VACUUM SEALER FOR ELECTRONICS/INDUSTRIAL USE

T-200EM is an extra wide all stainless steel Table Top model with two seal bars side to side. Deep drawn vacuum chamber with rounded corners for optimum cleanliness and the least particle count. Transparent cover helps visual quality assurance. Sealing bars in the vacuum chamber are easy to remove for maintenance.

The deep chamber design gives you the flexibility in vacuum packing large profile products as well as the small, low profile items using a Space Filler that comes with the machine to adjust the net payload volume. 10 program capability offers the ultimate in process control.

QUICK FACTS



TABLETOP SERIES
MODEL



TRANSPARENT COVER
FOR VISUAL QA



HIGHEST PRODUCTION
THROUGHPUT SEALER



FOR MEDICAL, INDUSTRIAL, AND
ELECTRONICS APPLICATIONS

T-200EM

TABLETOP VACUUM SEALER FOR INDUSTRIAL APPLICATIONS

AMAC T-200EM is an extra wide and easy to use vacuum packaging machine for Semicon, Chips, Motherboards, and countless other Electronics Applications and Disposable Surgical Packages, IV Bags and other Medical Applications for Hospitals, Surgical Centers and Clinics.

Available Options

Gas injection

After vacuum packing and before the bag is sealed, there is an option to add gas. This is often used to extend the shelf life, as extra protection for fragile products and to prevent discolouring of specific products.

Sensor control

Instead of the number of seconds, the required end vacuum is set in percentage (0 to 99%) with this sensor. The vacuum pump extracts air until the exact pre-set end vacuum has been reached. Regardless of the volume the pre-set end vacuum will always be reached.

Trim off Seal

Easily tear off the residual plastic bag with a trim off seal.

Top and Bottom Seal

Seal bars on both the inside of the lid and on the vacuum chamber.

1-2 Trim off Seal

Consists of one 3.5 mm convex seal wire and one 1.1 mm round wire.

Cushion Protection Control

Precision Control System with 20 programs



[AMAC's machines are] fast and robust vacuum packing machines with a world-wide reputation.

Accessories

- Filler plates
- Service kit

Additional Features

- Flexible for various-size product
- Made of stainless steel
- Optimal hygiene and low particle counts
- Robust table top chamber machine
- Filler plates for faster cycle & adjusting seal height

All features available in the series



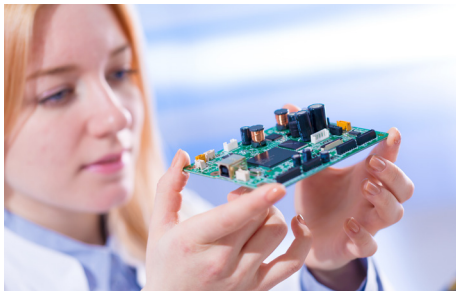
Product Specs and Applications

Contact us to learn more about this and any other product in our series

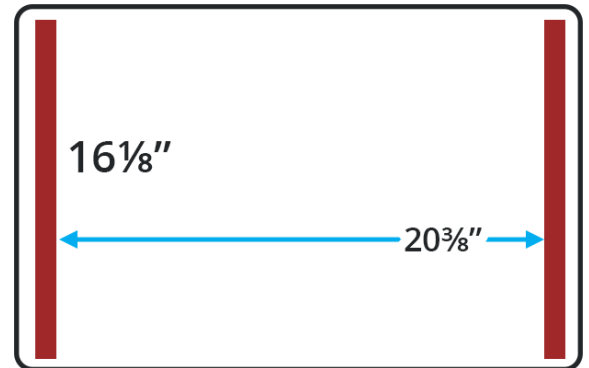
The robust, stainless steel AMAC T-200EM vacuum packer is standard equipped with a Busch vacuum pump. The machine complies with CE standards and ETL listed as an option.

Specifications Table

| | |
|---------------------------------------|---|
| Machine Dimensions (L x W x H) | 20 ³ / ₈ " x 27 ¹ / ₂ " x 17 ¹ / ₄ " (530 x 700 x 440 mm) |
| Chamber Dimensions (L x W x H) | 16 ¹ / ₈ " x 20 ³ / ₈ " x 7 ¹ / ₄ " (410 x 520 x 185 mm) |
| Seal Bar Length | (2) x 16 ¹ / ₈ " (410 mm) |
| Vacuum Pump Capacity | 14.71 CFM (25 m3/h) |
| Machine Cycle | 20 - 40 sec. |
| Power | 0.75 – 1.0 kw |
| Voltage | 110 V 60 HZ standard. Other voltage option available |
| Weight | 161lbs. (73 kg) |



Seal Bar Configurations



STANDARD

01

ELECTRONICS

AMAC vacuum packaging protects against dust, damage, ultra violet and radio frequency contamination, electrostatic discharge, humidity oxidization, and corrosion.

02

AVIATION

An aircraft is made of thousands of delicate parts. After the valuable parts are finished, vacuum packaging protects them in handling, storage and transportation.