



# T-135EM

TABLETOP VACUUM SEALER FOR ELECTRONICS/INDUSTRIAL USE

T-135EM is an all stainless steel Table Top model with deep drawn vacuum chamber with rounded corners for optimum cleanliness and the least particle count. Transparent cover helps visual quality assurance. Sealing bars in the vacuum chamber are easy to remove for maintenance.

The deep chamber design gives you the flexibility in vacuum packing large profile products as well as the small, low profile items using a Space Filler that comes with the machine to adjust the net payload volume.

## QUICK FACTS



TABLETOP SERIES  
MODEL



TRANSPARENT COVER  
FOR VISUAL QA



HIGHEST PRODUCTION  
THROUGHPUT SEALER



FOR MEDICAL, INDUSTRIAL, AND  
ELECTRONICS APPLICATIONS

# T-135EM

TABLETOP VACUUM SEALER FOR INDUSTRIAL APPLICATIONS

AMAC T-135EM is a fast, compact and easy to use vacuum packaging machine for Semicon, Chips, Motherboards, and countless other Electronics Applications and Disposable Surgical Packages, IV Bags and other Medical Applications for Hospitals, Surgical Centers and Clinics.

## Available Options

### Trim Off Seal

Easily tear off the residual plastic bag with a trim off seal.



[AMAC's machines are] fast and robust vacuum packing machines with a world-wide reputation.

### Accessories

- Filler plates
- Service kit

### Additional Features

- Flexible for various-size product
- Made of stainless steel
- Optimal hygiene and low particle counts
- Robust table top chamber machine
- Filler plates for faster cycle & adjusting seal height

All features available in the series



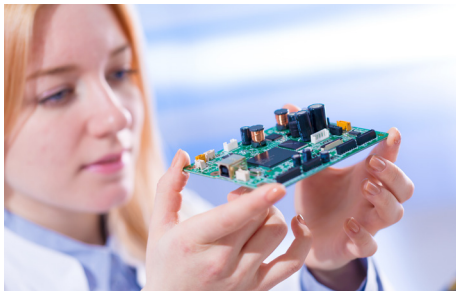
## Product Specs and Applications

Contact us to learn more about this and any other product in our series

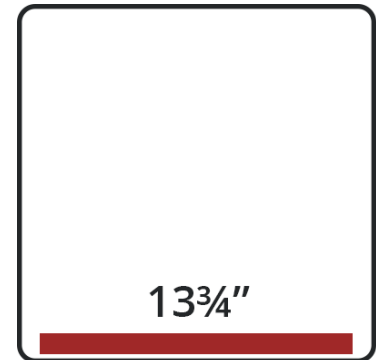
The robust, stainless steel AMAC T-135EM vacuum packer is standard equipped with a Busch vacuum pump. The machine complies with CE standards and ETL listed as an option.

### Specifications Table

<b>Machine Dimensions (L x W x H)</b>	20 <sup>5</sup> / <sub>8</sub> x 17 <sup>5</sup> / <sub>8</sub> x 15 <sup>1</sup> / <sub>8</sub> " (525 x 450 x 385 mm)
<b>Chamber Dimensions (L x W x H)</b>	14 <sup>1</sup> / <sub>2</sub> x 13 <sup>3</sup> / <sub>4</sub> x 5 <sup>7</sup> / <sub>8</sub> " (370 x 350 x 150 mm)
<b>Seal Bar Length</b>	13 <sup>3</sup> / <sub>4</sub> " (350 mm)
<b>Weight</b>	106 lbs. (48 kg)
<b>Vacuum Pump Capacity</b>	11.18 CFM (19 m3/h)
<b>Machine Cycle</b>	15-30 sec.
<b>Standard Power Requirement</b>	110V-1-60HZ 0.75-1.0 kw



## Seal Bar Configurations



STANDARD

01

### ELECTRONICS

AMAC vacuum packaging protects against dust, damage, ultra violet and radio frequency contamination, electrostatic discharge, humidity oxidization, and corrosion.

02

### AVIATION

An aircraft is made of thousands of delicate parts. After the valuable parts are finished, vacuum packaging protects them in handling, storage and transportation.