



M-300EM

MOBILE VACUUM SEALER FOR ELECTRONICS/INDUSTRIAL USE

M-300EM is the robust single chamber model in our series. All stainless steel Mobile model (Floor model) with deep drawn vacuum chamber of rounded corners for optimum cleanliness and the least particle count. Aluminum lid with clear window cover helps visual quality assurance. Extra seal bar configurations are available. The deep chamber design gives you the flexibility in vacuum packing large profile products as well as the small, low profile items using a Space Filler that comes with the machine to adjust the usable chamber heights and net payload volume. 10 program capability offers the ultimate in process control.

QUICK FACTS



MOBILE SERIES
MODEL



LID COVER WITH SEE
THROUGH WINDOW



CASTERS FOR EASY
TRANSPORTATION



HIGHEST PRODUCTION
THROUGHPUT SEALER



FOR MEDICAL, INDUSTRIAL, AND
ELECTRONICS APPLICATIONS

M-300EM

MOBILE VACUUM SEALER FOR INDUSTRIAL APPLICATIONS

AMAC M-300EM is a large capacity vacuum packaging machine for Semicon, Chips, Motherboards, and countless other Electronics Applications and Disposable Surgical Packages, IV Bags and other Medical Applications for Hospitals, Surgical Centers and Clinics.

Available Options

Gas injection

After vacuum packing and before the bag is sealed, there is an option to add gas. This is often used to extend the shelf life, as extra protection for fragile products and to prevent discolouring of specific products.

Sensor control

Instead of the number of seconds, the required end vacuum is set in percentage (0 to 99%) with this sensor. The vacuum pump extracts air until the exact pre-set end vacuum has been reached. Regardless of the volume the pre-set end vacuum will always be reached.

Trim off Seal

Easily tear off the residual plastic bag with a trim off seal.

Top and Bottom Seal

Seal bars on both the inside of the lid and on the vacuum chamber.

1-2 Trim off Seal

Consists of one 3.5 mm convex seal wire and one 1.1 mm round wire.

Cushion Protection Control

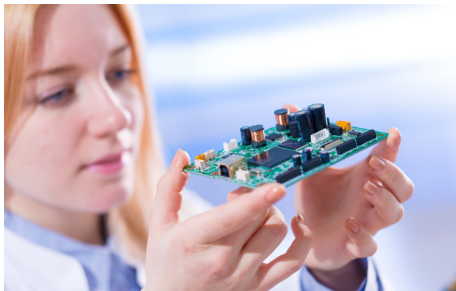
Precision Control System with 20 programs



Product Specs and Applications

Contact us to learn more about this and any other product in our series

The robust, stainless steel AMAC M-300EM vacuum packer is standard equipped with a Busch vacuum pump. The machine complies with CE standards and ETL listed as an option.



01

ELECTRONICS

AMAC vacuum packaging protects against dust, damage, ultra violet and radio frequency contamination, electrostatic discharge, humidity oxidation, and corrosion.

02

AVIATION

An aircraft is made of thousands of delicate parts. After the valuable parts are finished, vacuum packaging protects them in handling, storage and transportation.



[AMAC's machines are] fast and robust vacuum packing machines with a world-wide reputation.

Accessories

- Filler plates
- Service kit

Additional Features

- Flexible for various-size product
- Made of stainless steel
- Optimal hygiene and low particle counts
- Robust mobile chamber machine
- Filler plates for faster cycle & adjusting seal height

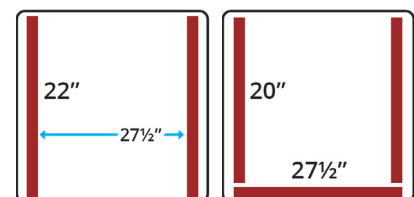
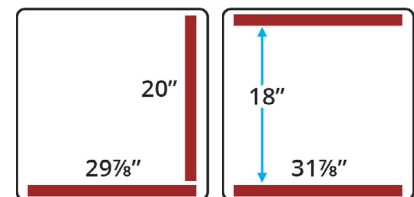
All features available in the series



Specifications Table

Machine Dimensions (L x W x H)	32¼ x 35¾ x 42½" (820 x 900 x 1070 mm)
Chamber Dimensions (L x W x H)	20 x 30 x 9¼" (510 x 760 x 235 mm)
Seal Bar Length	20" / 29⅞" (510 mm / 760 mm)
Weight	500 lbs (227 Kg)
Vacuum Pump Capacity	70.62 CFM (120 m3/h)
Machine Cycle	15 - 40 sec.
Standard Power Requirement	220/240 V-3 phase, 60 HZ 3.0-5.0 Kw

Seal Bar Configurations



OPTION 2

OPTION 3