



# M2-250EM

DOUBLE CHAMBER VACUUM SEALER FOR ELECTRONICS/INDUSTRIAL USE

M2-250EM is a robust double chamber model in our series. Double chamber with a lid cover swinging right to left. While you set the product in one chamber and close the lid cover, the machine will operate automatically include vacuum and sealing. You can then set another product on the other chamber.

When complete cycle in the first chamber, the lid cover will open automatically. You swing the lid cover to the other side of the chamber and close the lid cover, machine will operate automatically. You repeat this for the highest production throughput.

## QUICK FACTS



DOUBLE-CHAMBER  
CONSTRUCTION



SEAL TWO ITEMS  
CONCURRENTLY



HIGHEST PRODUCTION  
THROUGHPUT SEALER



FOR MEDICAL, INDUSTRIAL, AND  
ELECTRONICS APPLICATIONS

# M2-250EM

DOUBLE CHAMBER VACUUM SEALER FOR INDUSTRIAL USE

AMAC M2-250EM is a large capacity double chamber vacuum packaging machine for Semicon, Chips, Motherboards, and countless other Electronics Applications and Disposable Surgical Packages, IV Bags and other Medical Applications for Hospitals, Surgical Centers and Clinics.

## Available Options

### Gas injection

After vacuum packing and before the bag is sealed, there is an option to add gas. This is often used to extend the shelf life, as extra protection for fragile products and to prevent discolouring of specific products.

### Sensor control

Instead of the number of seconds, the required end vacuum is set in percentage (0 to 99%) with this sensor. The vacuum pump extracts air until the exact pre-set end vacuum has been reached. Regardless of the volume the pre-set end vacuum will always be reached.

### Trim off Seal

Easily tear off the residual plastic bag with a trim off seal.

### Top and Bottom Seal

Seal bars on both the inside of the lid and on the vacuum chamber.

### 1-2 Trim off Seal

Consists of one 3.5 mm convex seal wire and one 1.1 mm round wire.

### Cushion Protection Control

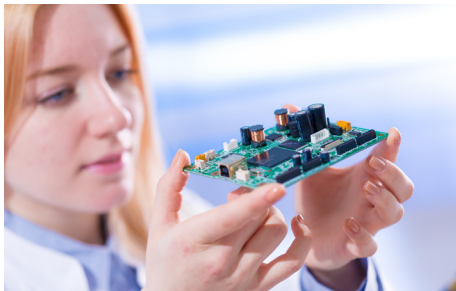
Precision Control System with 20 programs



## Product Specs and Applications

Contact us to learn more about this and any other product in our series

The robust, stainless steel AMAC M2-250EM vacuum packer is standard equipped with a Busch vacuum pump. The machine complies with CE standards and ETL listed as an option.



01

### ELECTRONICS

AMAC vacuum packaging protects against dust, damage, ultra violet and radio frequency contamination, electrostatic discharge, humidity oxidation, and corrosion.

02

### AVIATION

An aircraft is made of thousands of delicate parts. After the valuable parts are finished, vacuum packaging protects them in handling, storage and transportation.



[AMAC's machines are] fast and robust vacuum packing machines with a world-wide reputation.

### Accessories

- Filler plates
- Service kit

### Additional Features

- Flexible for various-size product
- Made of stainless steel
- Optimal hygiene and low particle counts
- Robust double chamber mobile packing machine
- Filler plates for faster cycle & adjusting seal height

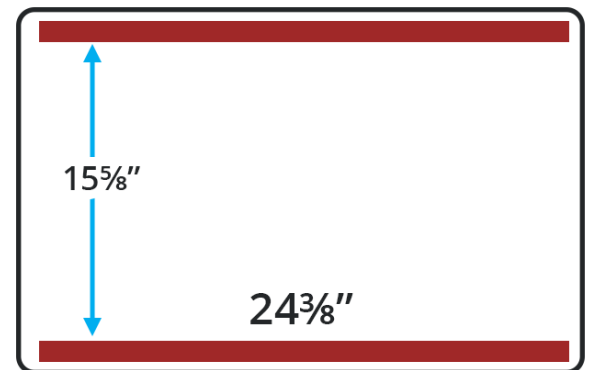
All features available in the series



## Specifications Table

Machine Dimensions (L x W x H)	31 x 60 <sup>3</sup> / <sub>4</sub> x 42 <sup>7</sup> / <sub>8</sub> " (790 x 1545 x 1090 mm)
Chamber Dimensions (L x W x H)	15 <sup>5</sup> / <sub>8</sub> x 24 <sup>3</sup> / <sub>8</sub> x 9 <sup>3</sup> / <sub>8</sub> " (400 x 620 x 240 mm)
Seal Bar Length	(2) x 24 <sup>3</sup> / <sub>8</sub> " ((2) x 620 mm)
Vacuum Pump Capacity	44.14 CFM (75 m3/h)
Machine Cycle	15 - 40 sec.
Power	3.3 - 4.5 kw
Voltage	220/240 V - 3 phase - 60 HZ standard. Other voltage option available

## Seal Bar Configurations



STANDARD